

# THE HOT BABBITT NEWS

Volume 23, Issue 1

Newsletter of the Sis-Q A's, Yreka, CA

January, 2022



**First Pictures of the New Ford Car**  
Get complete details **TOMORROW** at Ford salesrooms

The motor cars you have been waiting for are here. You will see them in the first pictures of the details of the new car. You will see them in the first pictures of the details of the new car. You will see them in the first pictures of the details of the new car.

**FORD MOTOR COMPANY**  
Detroit, Michigan

## WINTER IS OFFICIALLY HERE

Ready or not, winter weather is here. And you must admit, whether in mud or snow, traveling around used to be a bit more challenging. People rarely put on tire chains anymore, and who has to carry a *shovel* in the car? Be careful out there.




**Modern Automobile**

Five years ago—three years ago—two years ago—it would have been impossible to produce such a really fine car at such a low price. It is possible today only because of the development of new machines, new manufacturing methods and new production economies that are as remarkable as the car itself.

**FORD MOTOR COMPANY**  
Detroit, Michigan



**Put the Ford Truck on your pay-roll**



Ford platform bodies and dump bodies are used extensively in highway building, general construction and excavation work. In addition, Ford dump bodies are used for hauling coal, coke and garbage.

The Sis-Q A's, of Siskiyou County, California, is a chapter of  
The MODEL A FORD CLUB OF AMERICA



**President**.....Richard Giordanengo  
**Vice President**.....Linda Ellison  
**Secretary**.....Cindy Hammar

**Treasurer**.....Ann Noel  
**Tour Director**..... Bob Noel  
**Editor**.....Nancy Giordanengo\*

Please, mail correspondence to: Richard Giordanengo, 735 Deetz Rd., Mount Shasta, CA, 96067  
\*contact Nancy at: [nancyanne61@outlook.com](mailto:nancyanne61@outlook.com)

The Model A Ford Club of America is a non-profit corporation of California and a national historical society dedicated to the restoration and preservation of the Model A Ford automobile as manufactured from 1928 through 1931

## Mark Your Calendar

**Monday, Jan. 10<sup>th</sup> – Monthly Business Meeting and Potluck Social, 10am  
at the home of Mike Spiess and Pat Witt  
109 Montair Drive (yellow house, w/ white trim), Montague  
(off of Hwy 3 about halfway between Yreka and Montague)**

**January 29<sup>th</sup> & 30<sup>th</sup> – Turlock Swap Meet, Stanislaus County Fairgrounds**

## I've been thinking...

The dim days of winter are growing - if only slightly - ever longer each day. It's just a couple of extra minutes of light every day, but it's noticeably adding up. As usual, however, just as the days are getting longer they are also getting colder. Warm coats, boots, and mittens are standing by, ready for service, and the snow shovels are waxed and propped up on the front porch against the firewood box. The old cat spends hours curled up in front of the stove and, since the bustle of Christmas, everything in the house is moving a little more slowly and a body has a lot of time to think about stuff over a warm cup of coffee. Maybe that's one of the values of slowing down a little - it forces us to scrutinize and analyze not only ourselves but the chaotic world around us, which seems to increasingly press in more closely and from all directions. I think I'll have another cup of coffee.

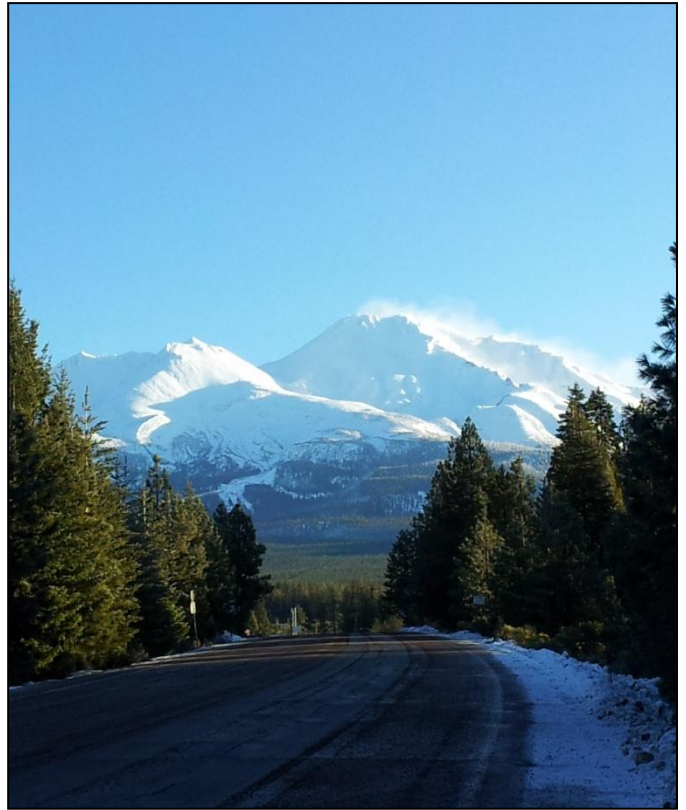
Our club Christmas party was great fun. Give a warm thank you to Pam Gabrielson, who made all the arrangements, and also made time to put together the photo collage, score sheets and prizes for the "Guess the Baby Photo" game. Most of us (except Nancy G., who scored nine out of eleven!) had a great deal of difficulty in matching the photos with the names. I only got five correct (and two of those were the wife and myself). Also, a big thank you to Ann Noel for organizing the gift exchange and keeping everyone on track. It was sure a great way to wrap up the year!

I hope you all had a fine Christmas. It was a white one in many parts of the county, and a good time to stay inside a warm, cozy house and off the interstate.

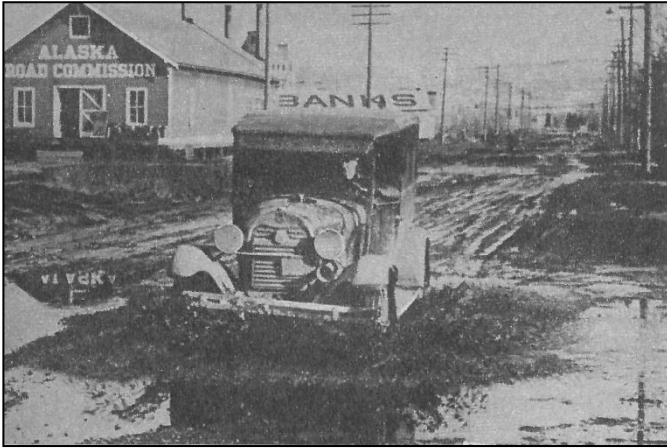
So, a new calendar hangs in the kitchen, with 2022 at the top. All those 2's look a bit odd. I guess I'll get used to it, just like I got used to 1999 when it came around. I think there are a few good tour ideas that we have all been kicking around for a while, and maybe this is the year to get those under way. Our first business meeting of the year will be a potluck brunch at Mike and Pat's home in Shasta Valley. Bring your best dish and maybe a tour idea or two, and let's start filling in the calendar.

Welcome, to new member Frank Spagnolo. Frank lives in McCloud and recently purchased the 1929 Coupe, which Cindy Hammar was selling. It's nice to see that car stay in the area, and we look forward to Frank spending some time on the road with us all.

The new year also means that membership renewals are due. If you have not already, please remember to pay your dues to Ann Noel soon. Have a happy and healthy New Year! - RG

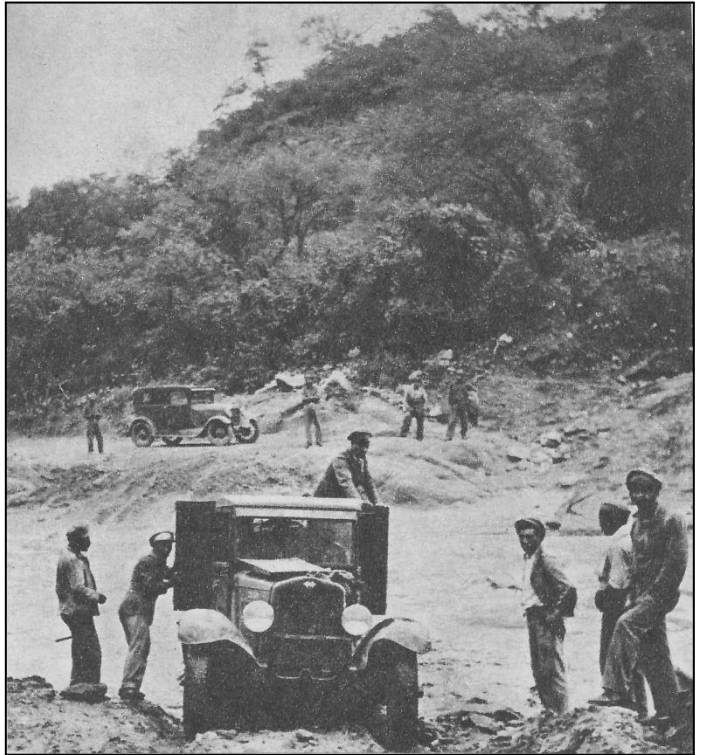


# SOME OF THE ROADS BACK THEN



**Above:** Main Street, in Fairbanks, Alaska looks like it used to be quite a slog in wet weather.

**Right:** This portion of the Pan-American Highway, somewhere in Bolivia, seems a little sketchy. That sure looks like a 1929 Ford Tudor Sedan in the background. Tough machine!



Tom Peterson's 1930 Sedan restoration project is making good progress.

He had it out for a short test drive recently and, just as you might imagine, it was a little breezy without windows and doors. The paintwork is complete and the interior is starting to come together. And, of course, what's a restored car without a new set of tires?

We look forward to seeing this beauty on the road soon!



# ALTERNATIVE ENERGY

While gasoline and diesel are powerful fuels, they are far from the only possible options for powering the automobile. Beside gasoline, Henry Ford had various alcohols and alcohol/gasoline blends in mind when he began producing the Model T, as the internal combustion engine is not a particularly finicky eater. When running with alcohol, early car owners merely adjusted the carburetor (the GAV knob under the Model A dash), as more alcohol is required for combustion, compared to gasoline.

During the Second World War, tinkerers around the globe successfully renewed and adapted old energy technologies, as traditional liquid fuels became increasingly scarce. Below are a couple of examples of early 1940's ingenuity.

The electric car was a common sight on the road in the early days of motoring, but gradually lost popularity as the internal combustion engine and the wide availability of gasoline became the norm. By the 1920's, the electric car was chiefly forgotten about, but reappeared from time to time (**right**), and has come back into vogue a century later.

## No Gas? No Matter

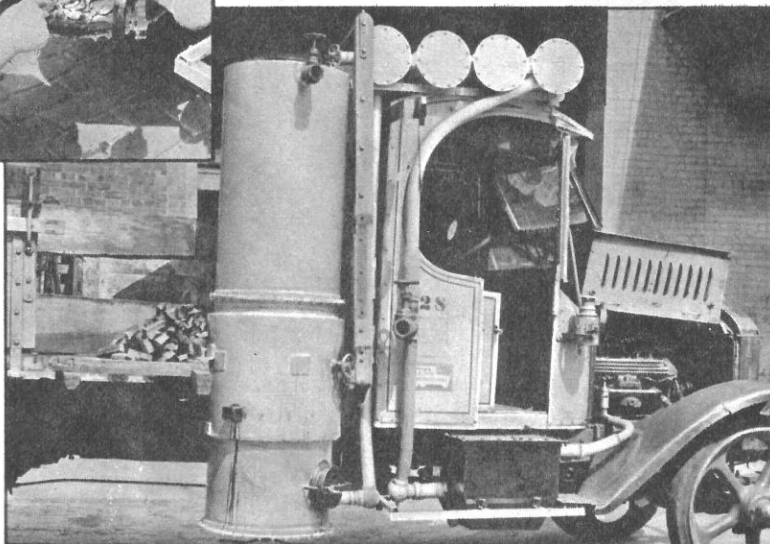
**J**OSEPH JACOBS is one man who'll never fume over the gas shortage. Superintendent of a Minneapolis electric company, he built this electric car in his spare time. Powered by three 12-volt storage batteries and driven by two motors, the machine will keep plugging for 100 miles without recharging. Top speed of this overgrown scooter is 15 miles per hour, but Mr. Jacobs hasn't been late at the office yet.

76



## Wood Fuel Delivers Beer

**T**HE Rheingold Brewery, New York City, has converted some of its trucks to use wood as fuel. Gas from burning wood is fed into the cylinders. The generator (left) fireplace-like gets a cleaning. On the truck shown below the generator tank (left), filtering tank (center) and cleaners and coolers on top are shown. With beer deliveries being such a problem for the thirsty, here is a note of cheer. Obviously these trucks should be more numerous and of far greater size.



Wood is man's original fuel source, and in the industrial age it powered some of the earliest steam engines (in the U.S., ALCO built the last wood-fired locomotive in 1927). Wood-gas technology was first applied to street lighting in the 1800's, and the interest in wood gasification saw renewed enthusiasm in the 1940's for powering the internal combustion engine (**left**), and was particularly adapted to commercial vehicles.

Another wood-based fuel is bio-methanol, also known as wood alcohol, which is exactly what it sounds like – alcohol made from trees. In some heavily forested parts of the world, the idea of commercial bio-methanol production seems to be catching on.

# SIS-Q A's CHRISTMAS PARTY



Cindy Hammar scrutinizes the "Who's Who?" baby photos. It was a much bigger challenge than we thought.



Happy diners enjoyed a sumptuous feast at Strings Italian Restaurant, in Yreka, and left filled with good food and good cheer.

**2022**

## Sis-Q A's MEMBERSHIP FORM

Membership Renewal - \$15.00

New Membership – FREE

Name \_\_\_\_\_ Spouse \_\_\_\_\_

Address \_\_\_\_\_ City \_\_\_\_\_ St \_\_\_\_\_ Zip \_\_\_\_\_

E-Mail Address \_\_\_\_\_ MAFCA Membership No. \_\_\_\_\_

Year and Body Style of your Model A (s) \_\_\_\_\_

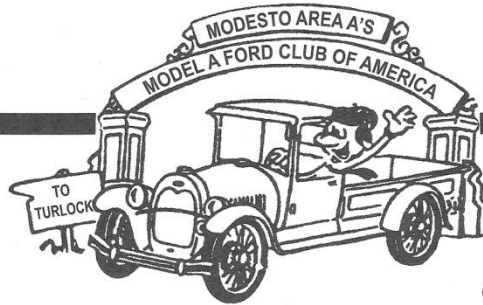
Your Birthday \_\_\_\_\_ Spouse's Birthday \_\_\_\_\_

Phone number \_\_\_\_\_ Other contact \_\_\_\_\_

Please, make checks payable to: **Sis-Q A's**

Mail to: Ann Noel, 2234 Owens Way, Hornbrook, CA 96044

*Rain or  
Shine Meet*



*55<sup>th</sup> Annual*

# TURLOCK SWAP MEET

**January 29, 2022 • 7 a.m. to 5 p.m.  
January 30, 2022 • 7 a.m. to 3 p.m.**

*Stanislaus County Fairgrounds  
900 N. Broadway • Turlock, California 95380*

### **CLASSIC CARS FOR SALE**

**\$50 for 2 days! Cars 2000 or Older  
First Come Basis  
NO PARTS**

**Vehicles must be driven to space**

Visit Our Website at [www.turlockswapmeet.com](http://www.turlockswapmeet.com)  
for further information

### **▲ All Swap Spaces Pre-Registered ▲**

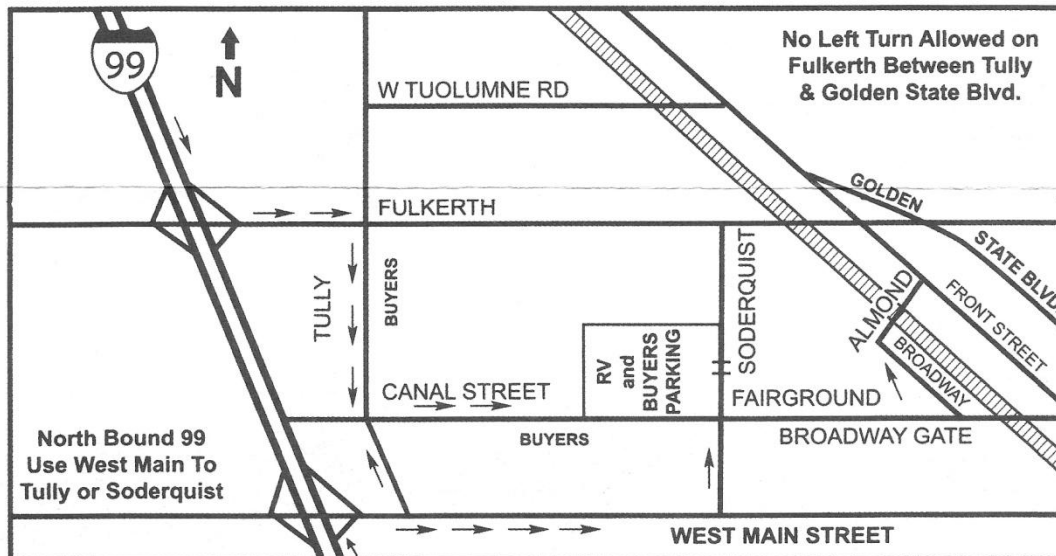
Admission • \$20.00 Saturday/Sunday, \$10.00 Sunday Only

Children under 12 FREE

WRISTBANDS AT GATE

RV Parking \$30 for Weekend

**All bags, backpacks & purses subject to  
inspection upon admission.**



*Food and Drink  
Available at  
Concession  
Stands • ATM  
Available on  
Grounds*

**Not  
Affiliated  
With Any  
Other Swap  
Meets!**

*Notice: We will observe any government restrictions in place at the time of our show.*  
**SERVICE DOGS ONLY, NO ALCOHOL OR FIREARMS ALLOWED ON FAIRGROUNDS.**

For Information Write or Call ..... MODESTO AREA A'S c/o Tim Nicolau P.O. Box 67, Ceres CA, 95307, (209) 571-1232

## OPERATION OF FORD MODEL "A" CAR

Illustration shows the driving compartment with the control levers, foot pedals and instruments on the instrument board, with each part named.

The gear-shift is the standard three-speeds forward and one reverse. The transmission is a selective sliding gear shift type.

### Starting the Engine and Driving Pointers

1. Release the ignition lock cylinder by turning the switch key to the right.

2. See that the spark lever is retarded (at top of quadrant is retarded); the throttle lever (under steering wheel) advanced three or four notches down on the quadrant and the gear shift lever in neutral position.

Starting the engine with the spark advanced may cause the engine to kick back, and damage the starter parts. After the engine is started, advance the spark lever about half way down the quadrant.

3. If the engine is cold, turn the carburetor adjusting rod one full turn to the left to give it a richer mixture for starting. This rod serves both as a choke for starting and as an enriching adjustment. Next pull back the rod, at the same time pressing down on the starter button with foot. The instant

the engine starts, withdraw foot from the starter button and release the choke rod, next advance the spark lever about half way down the quadrant. When the engine warms up, turn the adjusting rod back to the right. Never drive continuously with adjusting rod more than  $\frac{1}{4}$  turn open. (See adjustment of carburetor.)

When starting a warm engine, do not pull back the choke unless the engine fails to start on the normal mixture as there is a possibility of flooding the engine with an over rich mixture of gas. If you should by accident flood the engine, open the throttle and with the choke rod in normal position, turn the engine over a few times to exhaust the rich gas.

As a refresher, for starting your car, here is an excerpt from the "*Ford Model 'A' Instruction Book*".

The original instruction manual contains all sorts of practical information for the new car owner, including specifications, maintenance and operation instructions, lubrication charts, and headlight adjustment. The booklet even includes instructions on how to properly remove the tires from the wheels and reinstall them again after a flat repair, using the tire irons provided in the Model A tool kit.

